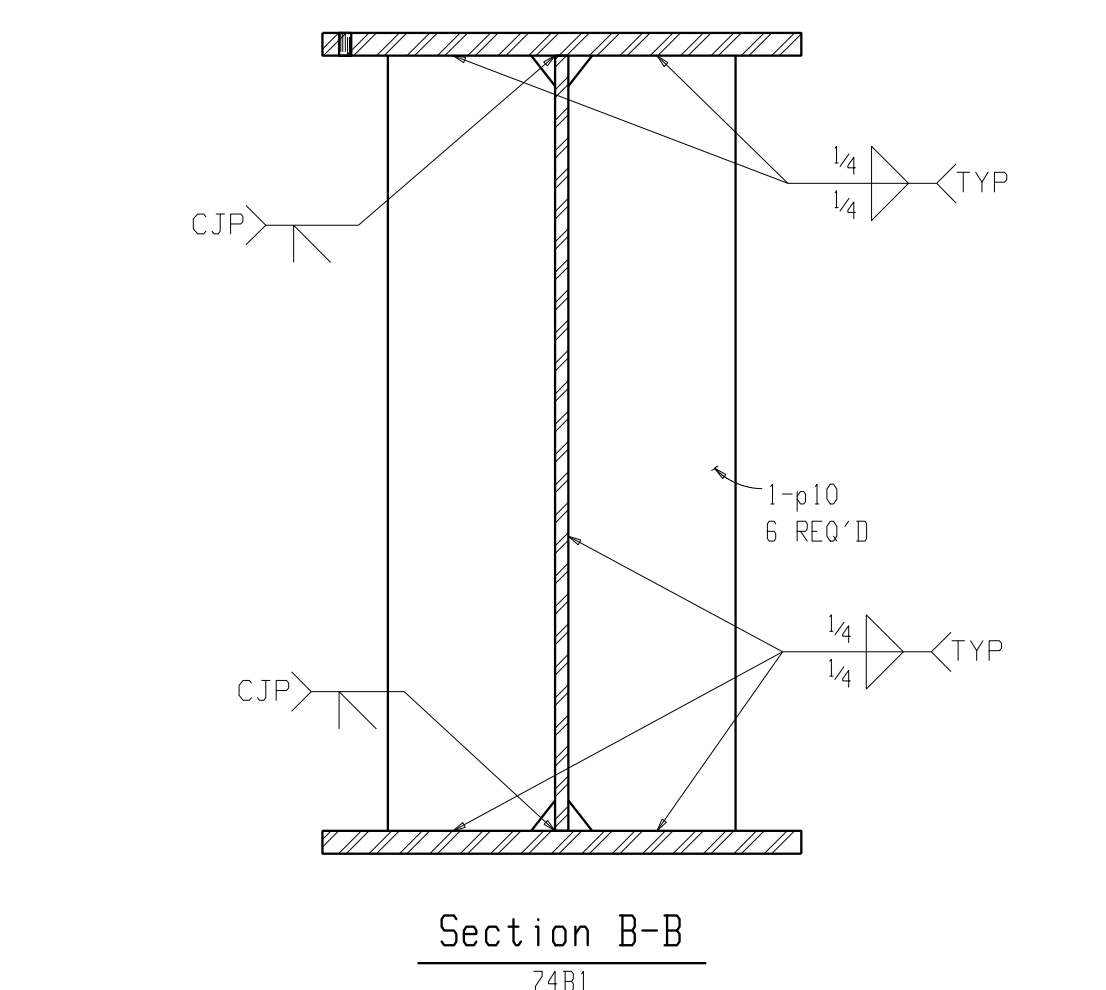
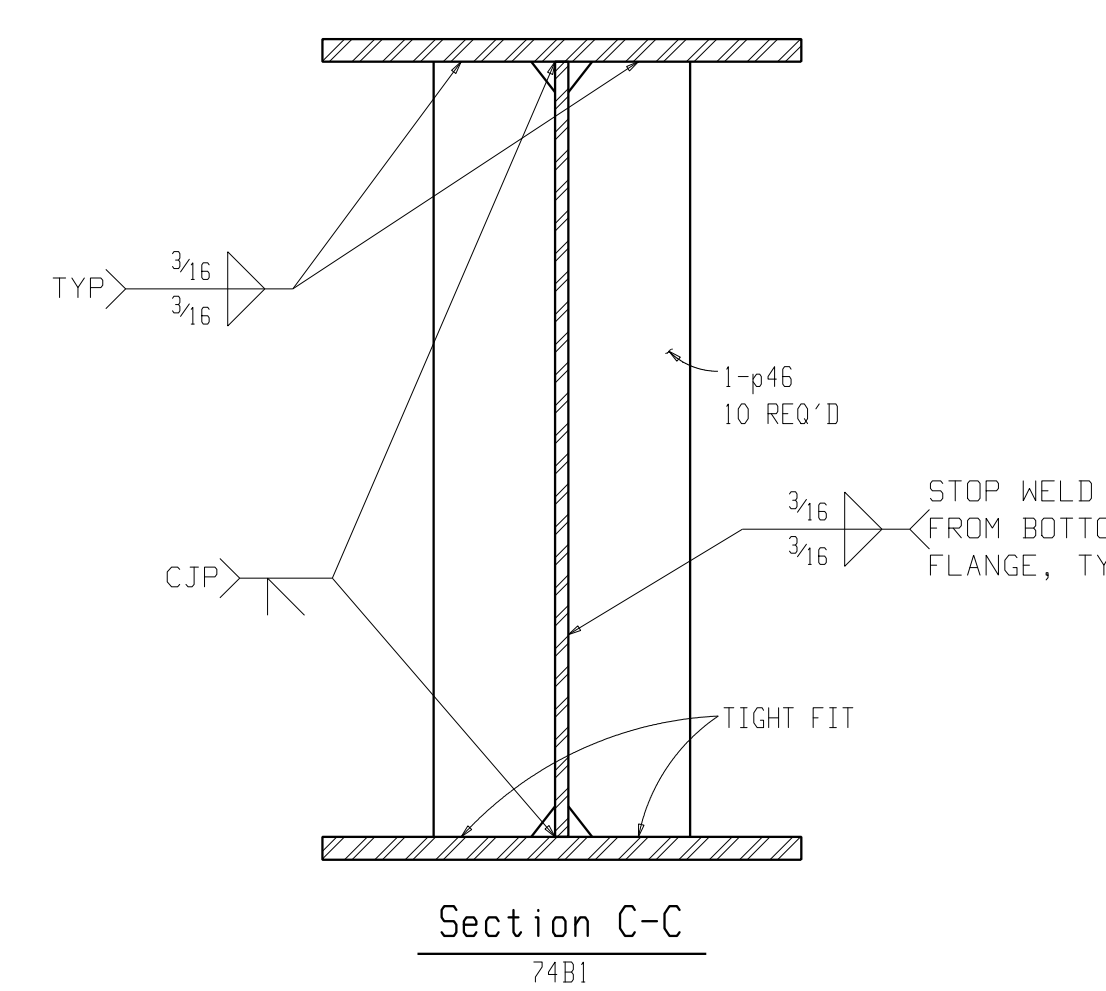
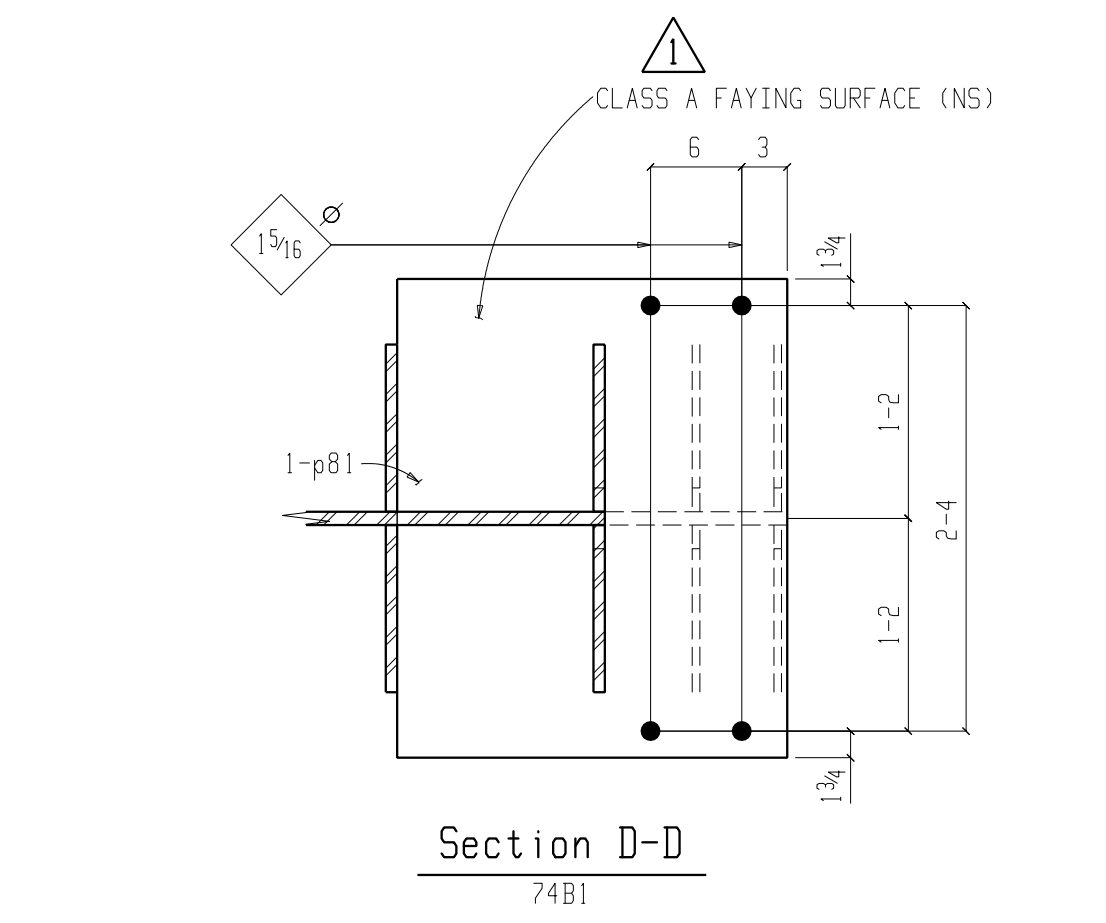
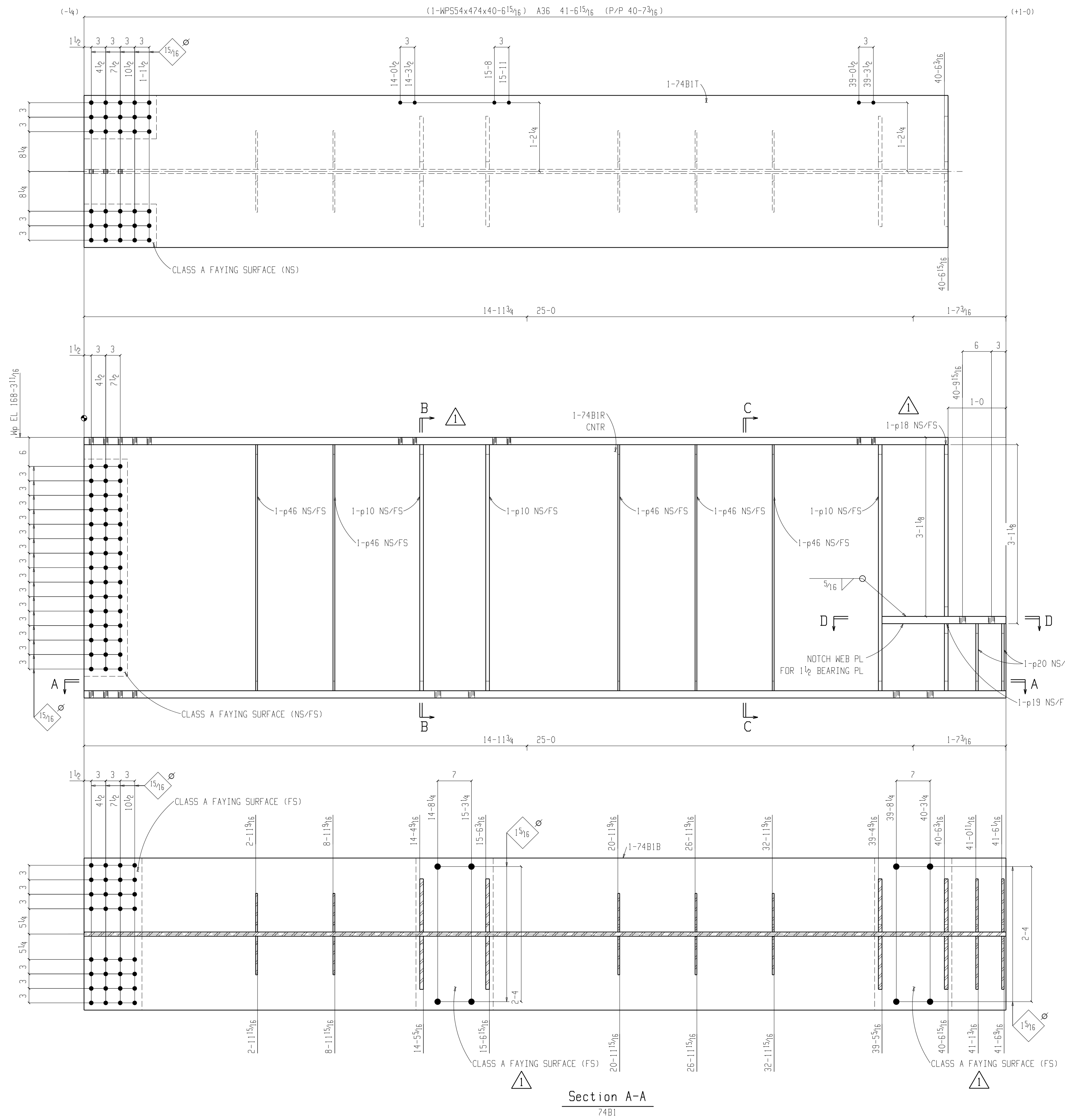


BILL OF MATERIAL

PC MK	SUB	QTY	DESCRIPTION	LENGTH		MATERIAL	REMARKS	WEIGHT EA.	WEIGHT TOTAL
				FEET	INCHES				
74B1		ONE	BEAM					21336	21336
	74B1B	1	PL 1/2x21/2	41	6 15/16	A36		6686	6685
	74B1T	1	PL 1/2x31/2	40	6 15/16	A36		6525	6525
	74B1R	1	PL 7/8x51	41	6 15/16	A36		6314	6314
	p81	1	PL 1/2x25 1/4	2	7 1/2	A36		344	344
	p10	6	PL 3/4x11	4	3	A36		120	716
	p18	2	PL 3/4x11	2	11 1/4	A36		84	167
	p19	2	PL 3/4x11	1	1 1/4	A36		33	65
	p20	4	PL 1/2x11	1	1 1/4	A36		22	87
	p46	10	PL 3/8x8	4	3	A36		44	434
			FIELD BOLTS						
		4	1/4 Dia A325SC	0	6		IHD WASH		
		4	1/4 Dia A325SC	0	5 1/2		IHD WASH		



ONE BEAM 74B1  
 W 54x70  
 F 31/2x1 1/2

REV.	DESCRIPTION	BY	CHK	DATE
1	ANGLES REMOVED; BOLTS CHANGED; FAYING SURFACE ADDED	PC	VP	07-24-13
0	FOR FABRICATION	PC	VP	07-03-13
B	STIFFENER MKS ADDED; WELD ADDED - FOR APPROVAL	PC	VP	06-11-13
A	FOR APPROVAL	PC	VP	05-21-13

SHOP NOTES				JOB USE
MATERIAL:	ELECTRODES:	TYP PROJECT WELDS, U.N.O.		
AS NOTED	E70XX	WELD SIZE: 1/4		
BOLTS:	A325 U.N.O.	CLIP ANGLE & STIFFENER PL		
1/2 U.N.O.		FILLET (NS/FS), 3 SIDES		
SURFACE PREP.:	PAINT:	OTHER WELDS, ALL AROUND		
SEE SPECS	SEE SPECS			

CUSTOMER:			
PROJECT NAME: Ring Module Shop Extension			
LOCATION: Virginia			
ENGINEER:	EUST. P.O.:	DATE:	
MMM	-	05-21-13	
DETAILING COMPANY:	JOB No.:	DWG. No.:	REV.:
VP & Associates, Inc.	63192	074	1

NOTE(S):  
 1. CONTRACTOR TO FIELD VERIFY ALL DIMENSIONS AND ELEVATIONS PRIOR TO FABRICATION AND INSTALLATION.  
 2. ALL VERIFIES WILL BE ASSUMED CORRECT AS SHOWN UNLESS NOTED OTHERWISE BY APPROVER.