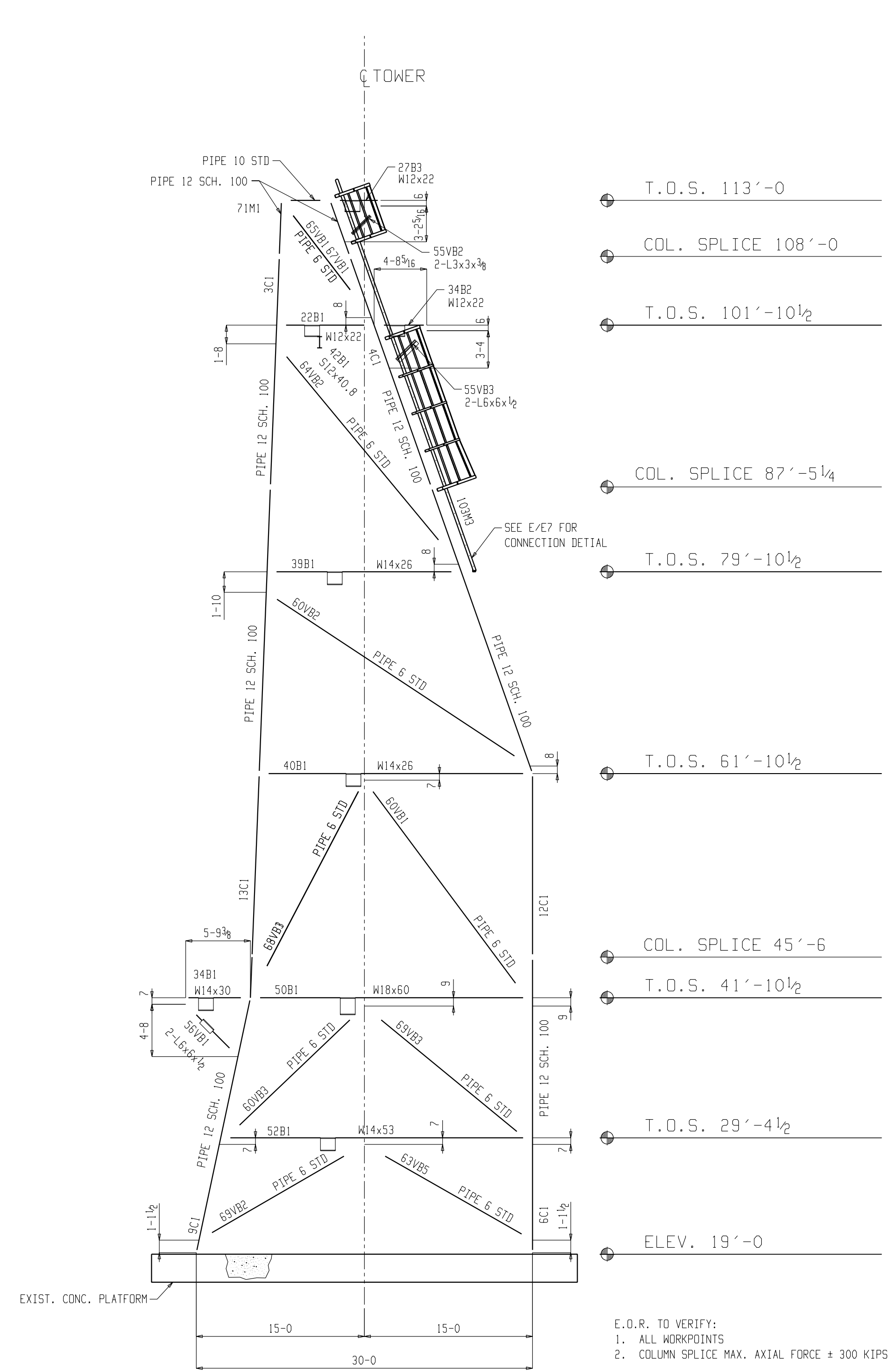


NORTH ELEVATION



SOUTH ELEVATION

NOTE(S):
 1. CONTRACTOR TO FIELD VERIFY ALL DIMENSIONS AND ELEVATIONS PRIOR TO FABRICATION AND INSTALLATION.

| | | | | | | | |
|--------------------------|---------------|-------------|------------|-----------------|----|----------|--|
| MATERIALS: | AS NOTED | WELDING: | 1/4 U.N.O. | SURFACE PREP: | | COLOR: | |
| HOLES: | 13/16" U.N.O. | ELECTRODES: | E70XX | PAINT: | | MILS: | |
| RELEASED TO FIELD | | | | | | | |
| RELEASED FOR FABRICATION | | | | | | | |
| APPROVAL RECEIVED | | | | | | | |
| ISSUED FOR APPROVAL | VP | 05-19-10 | | | | | |
| CHECKED | VP | 05-19-10 | 0 | RELEASE FOR FAB | | 06-21-10 | |
| DRAWING | GR/PC | 05-19-10 | A | FOR APPROVAL | | 05-19-10 | |
| STATUS | BY | DATE | REV. | DESCRIPTION | BY | DATE | |

FLORIDA STRUCTURAL STEEL
 TAMPA, FLORIDA

A DIVISION OF
TAMPA FAB, INC.



CUSTOMER:
 JOB SITE:
 Great Inagua, Bahamas

CONTRACT No.:
 -
 DRAWING No.: 5491-E5
 REV. 0