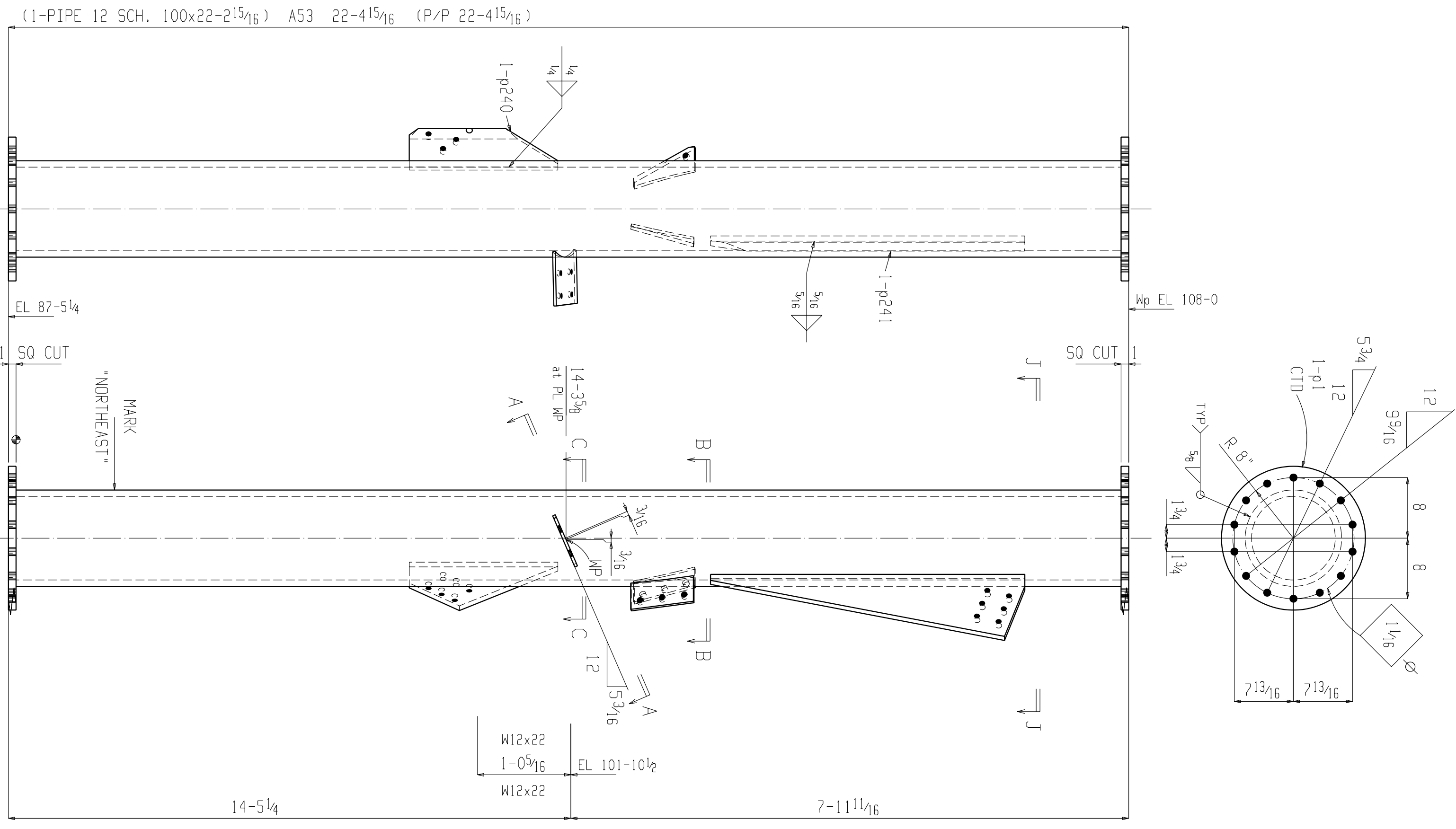


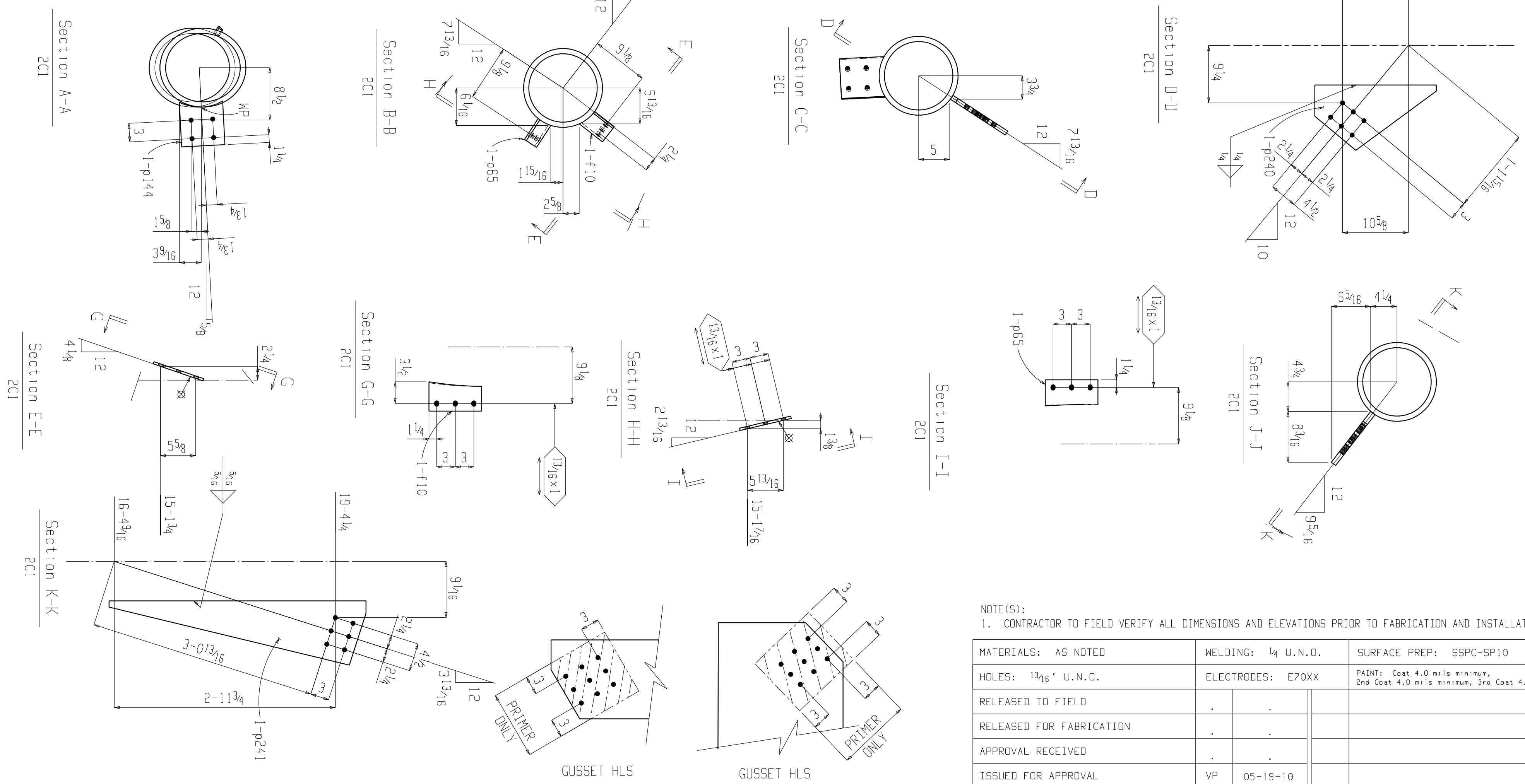
BILL OF MATERIAL

MAIN PC MK	SUB PT No.	QTY	DESCRIPTION	LENGTH		MATERIAL	REMARKS	WEIGHT	
				FEET	INCHES			EA.	TOTAL
2C1		1	ONE COLUMN					2710	2710
	2C1	1	PIPE 12 SCH. 100	22	2 15/16	A53	SEE	2385	2385
	p1	2	PL 1x19			A36		80	161
	p241	1	PL 3/8x10 3/8	3	5 1/2	A36		107	107
	p240	1	PL 3/8x10 5/16	1	7 1/2	A36		44	44
	p144	1	PL 3/8x7	0	7 1/4	A36		5	5
	f10	1	PL 3/8x4 1/4	0	8 1/2	A36		4	4
	p65	1	PL 3/8x4 1/4	0	8 1/2	A36		4	4
			FIELD BOLTS						
		14	1 Dia A325N	0	3 1/2		IHD WASH		



ONE COLUMN 2C1

SHOP NOTE: PRIMER ONLY ALL SHEAR TABS



TYP PAINT MASKING DETAILS
PRIMER COAT ONLY

NOTE(S):
1. CONTRACTOR TO FIELD VERIFY ALL DIMENSIONS AND ELEVATIONS PRIOR TO FABRICATION AND INSTALLATION.

MATERIALS:	AS NOTED	WELDING:	1/4 U.N.O.	SURFACE PREP:	SSPC-SP10	COLOR:	
HOLES:	13/16" U.N.O.	ELECTRODES:	E70XX	PAIN:	Coat 4.0 mils minimum, 2nd Coat 4.0 mils minimum, 3rd Coat 4.0 mils minimum	MILS:	
RELEASED TO FIELD							
RELEASED FOR FABRICATION							
APPROVAL RECEIVED							
ISSUED FOR APPROVAL	VP	05-19-10					
CHECKED	VP	05-19-10	0	RELEASE FOR FAB			06-21-10
DRAWING	GR/PC	05-19-10	A	FOR APPROVAL			05-19-10
STATUS	BY	DATE	REV.	DESCRIPTION	BY	DATE	

CUSTOMER:
JOB SITE: Great Inagua, Bahamas



CONTRACT No.:
DRAWING No.: 5491-D2
REV. 0