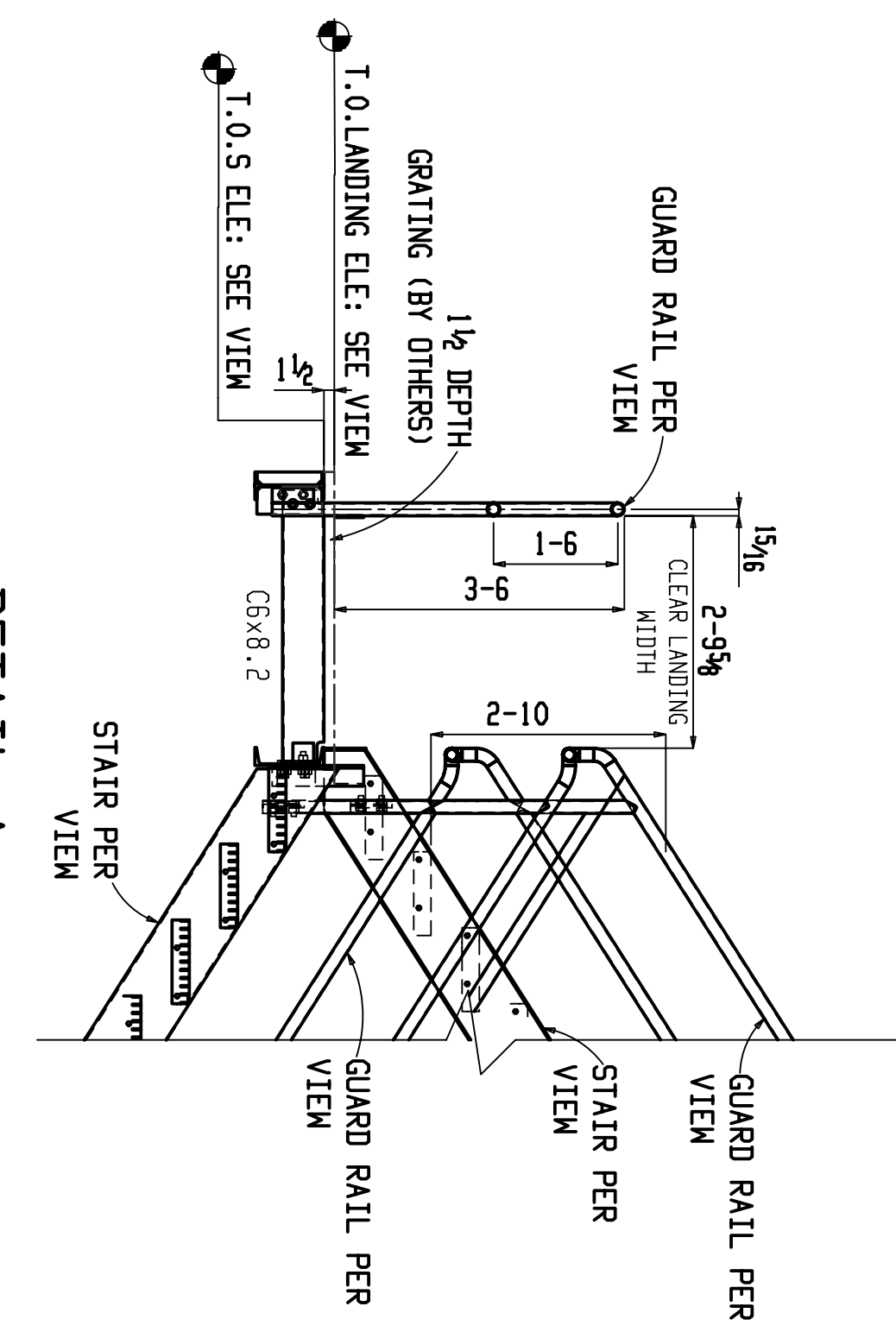
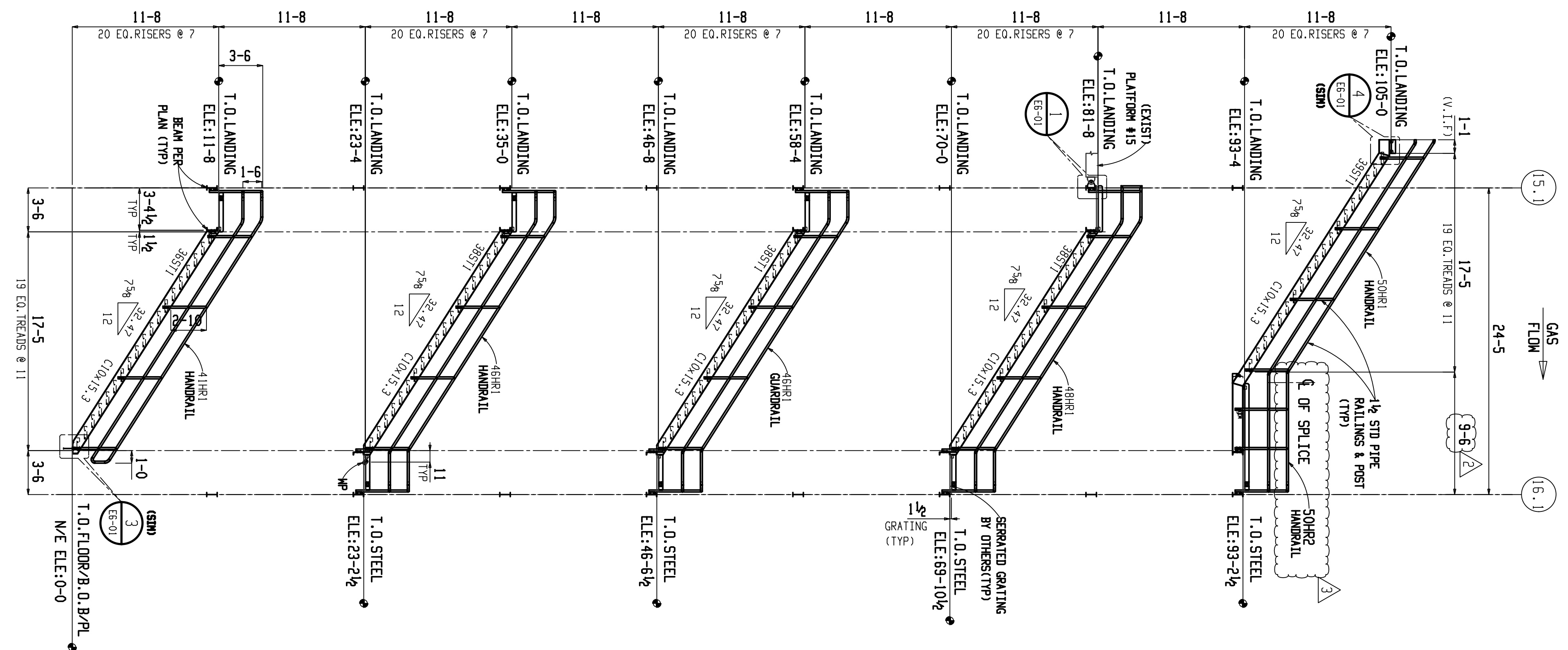


1 STAIRTOWER #1 STAIR ELEVATION VIEW-1

FIELD NOTE:
 1) ALL FIELD BOLTS ARE 3/4 DIA A325N TYPE 1 GALV. BOLTS WITH ASS30H NUTS.
 2) ALL BOLTS FOR HANDRAILS & TOE PLATES ARE A307 GALV. (U.N.O.)



DETAIL-A



2 STAIRTOWER #1 STAIR ELEVATION VIEW-2

FIELD NOTE:
 1) ALL FIELD BOLTS ARE 3/4 DIA A325N TYPE 1 GALV. BOLTS WITH ASS30H NUTS.
 2) ALL BOLTS FOR HANDRAILS & TOE PLATES ARE A307 GALV. (U.N.O.)

QUANTITIES SHOWN FOR (1) C-FRAME HRSG
 TOTAL OF (2) C-FRAME HRSG'S REQUIRED

WELD SYMBOLS ARE PER AWS A2.4 LATEST EDITION

NOOTER/ERIKSEN INC.
 SUPPLIER SUBMITTAL REVIEW

REVIEW OF VENDOR DRAWINGS DOES NOT RELIEVE THE VENDOR OF RESPONSIBILITIES FOR ACCURACY OF DIMENSIONS AND COMPLIANCE TO CODES, NOOTER/ERIKSEN SPECIFICATIONS AND P.A. REQUIREMENTS

A	REVIEWED AND ACCEPTED
B	REVIEWED WITH COMMENTS (WORK MAY PROCEED)
C	REVISE AND RESUBMIT (WORK MAY NOT PROCEED)
D	REVIEWED FOR INFORMATION ONLY

RELEASE DATE: _____ REVIEWERS INITIALS: _____

PROJECT:	ST. JOSEPH ENERGY CENTER	JOB NO	CODE	SHT	REV	FE
DRAWING NO.	151240-PF-E01-05				A	

- SHOP NOTES:**
- Paint erection mark on left end of member as detailed. For Beams - left end - top flange & near side of web.
 - All W-shapes-A992, WT-992, plate, angle & channel-A36 (U.N.O.)
 - Cope depths are listed first. Cope lengths are to ends of beams.
 - 1 1/2 edge & end distance unless noted.
 - See Mid America Steel, Inc std. beam connection sheet for clip angle details.
 - Both Sides of material adjacent to open holes must be free of loose scale and burrs.
 - All welding to be done by A.W.S. certified welders.
 - Use E 70XX welding electrodes
 - Omit Paint Within 3" of all open holes. [] Yes [X] No
 - Welds shown are for strength - seal weld all joints when galvanizing is req'd.
 - Omit paint from all Nelson studs and surfaces notes "**
 - * No paint within 3" of the field welds.
 - Coat plate with carboline carbozinc 11 (green), 5 mils DFT.
 - ** Hold galvanizing back 3" from field welds.

REV.	DATE	DESCRIPTION
4	08-01-16	REVISED AS NOTED
3	07-29-16	REVISED AS NOTED
2	07-27-16	REVISED AS NOTED
1	07-18-16	ISSUED FOR CONSTRUCTION
0	06-01-16	FOR APPROVAL

Holes:	13/16 U.N.O	PAINT:	PER SPEC'S
PRE		DATE:	06-01-16
CHK. PRINT		DRAWN BY:	TL
APP. PRINT		CHECKED BY:	VP
APP. SEPIA		REVISED:	--
RECORDS		REF:	--
FAB.			
DUP.			
WEIGHT			

JOB and LOCATION:	ST. JOSEPH ENERGY CENTER NEW CARLISLE, INDIANA
ITEM:	STAIRTOWER #1 ELEVATION VIEWS
CUSTOMER:	NOOTER/ERIKSEN INC.
ARCH. ENG.:	NOOTER/ERIKSEN INC.
ORDER NO.:	S11579
SHEET NO.:	E3-01
REV.:	4

ALL VERIFIES WILL BE ASSUMED CORRECT AS SHOWN UNLESS NOTED OTHERWISE BY APPROVER

ERECTOR NOTE!
 USE 1-HIGH STRENGTH WASHER OVER ALL SLOTS IN CONNECTION ANGLES FOR ALL BEAM TO BEAM AND BEAM TO COLUMN CONNECTIONS.

NO BACK CHARGES WILL BE ACCEPTED UNLESS AUTHORIZED BY MID AMERICA STEEL, INC. DOCUMENTATION ON BACK CHARGES MUST INCLUDE MARK NUMBER OF INCORRECT PIECE AND A COMPLETE DESCRIPTION OF REMARK REQUIRED.