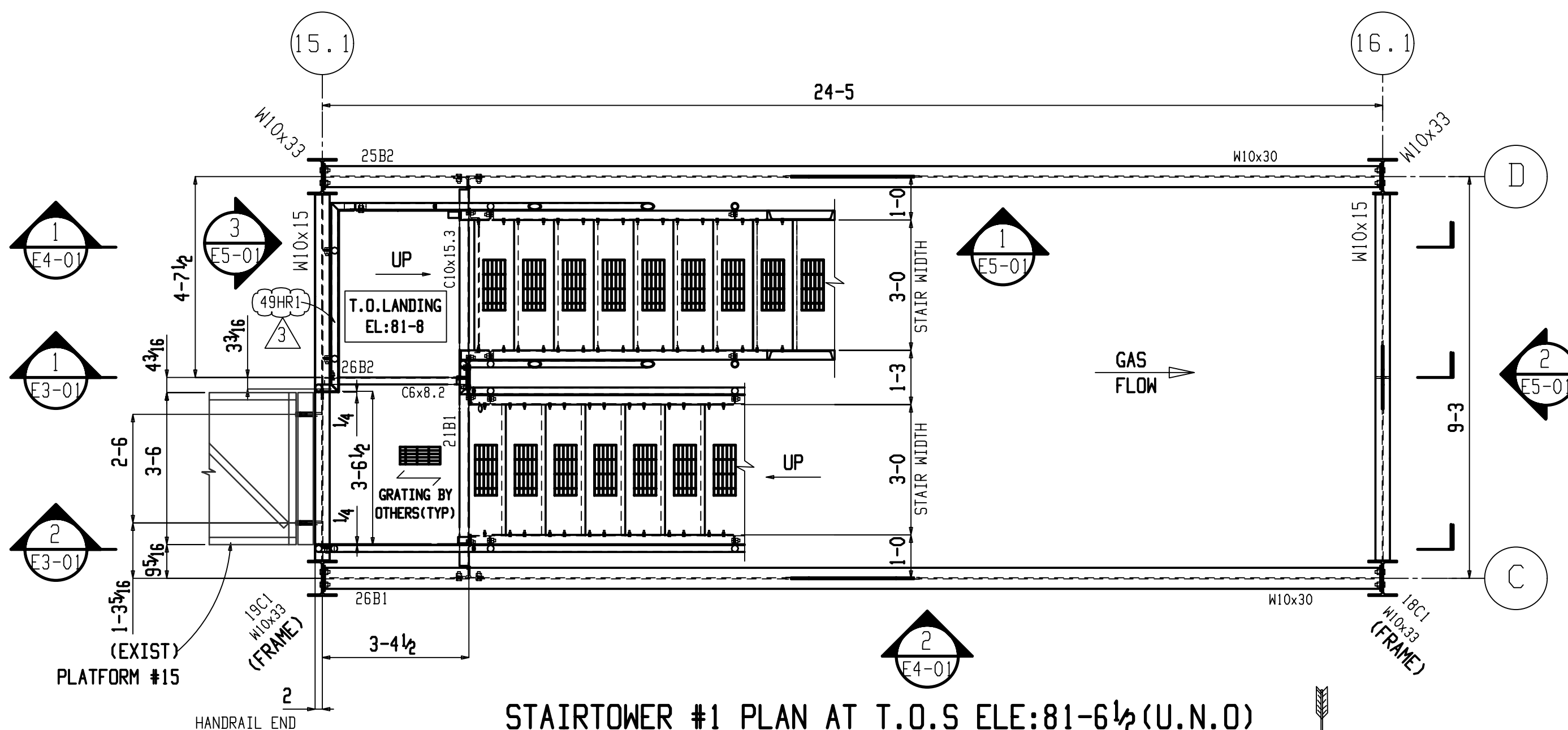


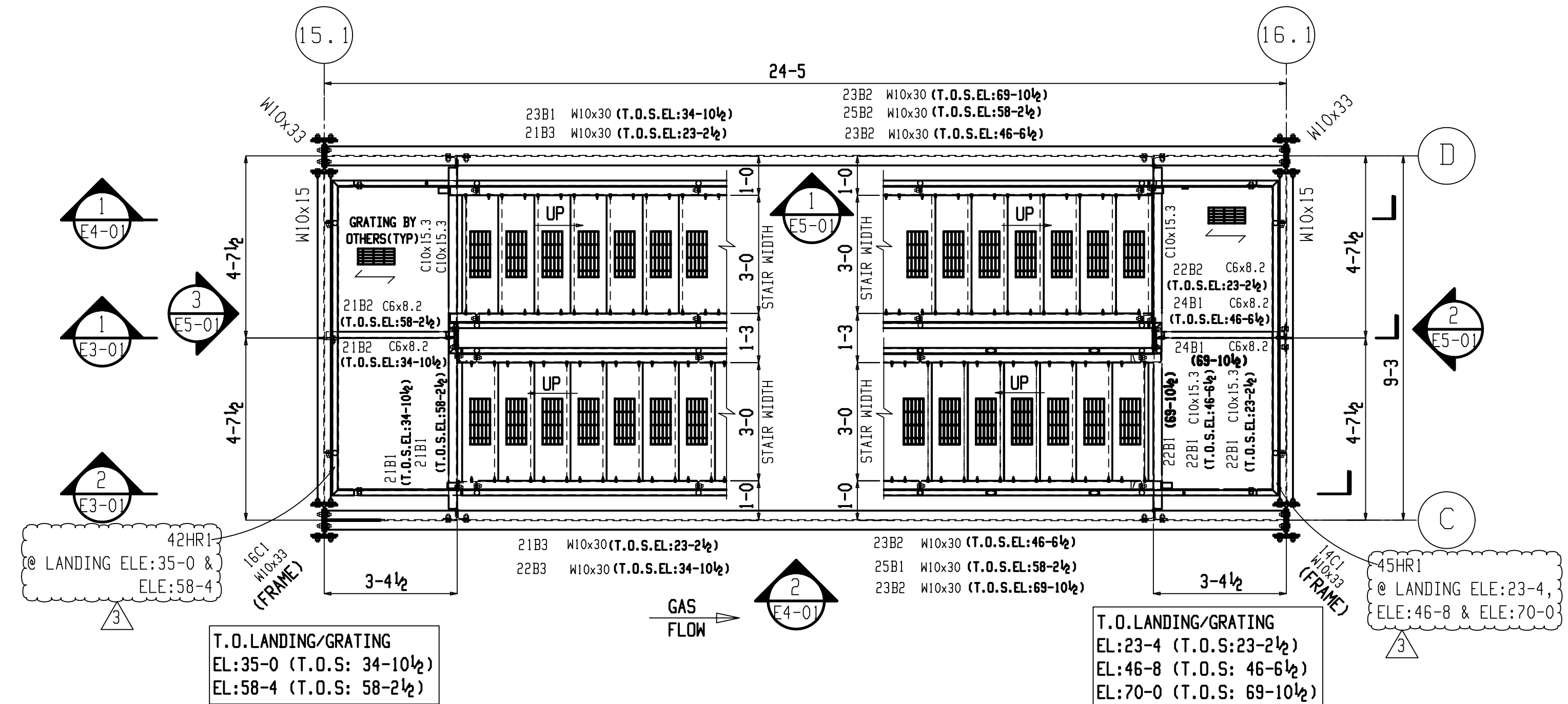
STAIRTOWER #1 PLAN AT T.O.S ELEV: 11-6 1/2 (U.N.O)

- FIELD NOTE:
- 1) ALL FIELD BOLTS ARE 3/4 DIA A325N TYPE 1 GALV. BOLTS WITH A563DH NUTS.
 - 2) FOR TYPICAL SECTION REFER SHEETS E6-01 & E7-01.
 - 3) GRATING AT LANDINGS ARE 1 1/2 x 3/16 (BY OTHERS)



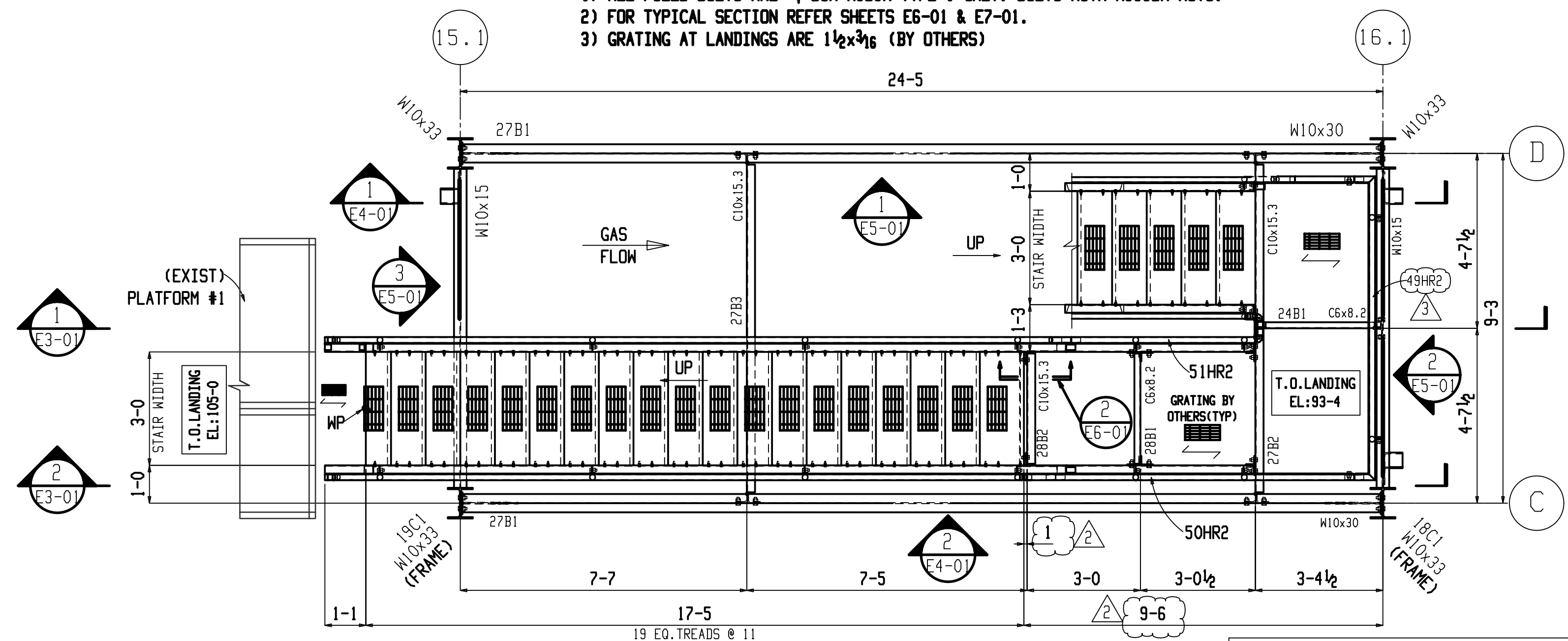
STAIRTOWER #1 PLAN AT T.O.S ELEV: 81-6 1/2 (U.N.O)

- FIELD NOTE:
- 1) ALL FIELD BOLTS ARE 3/4 DIA A325N TYPE 1 GALV. BOLTS WITH A563DH NUTS.
 - 2) FOR TYPICAL SECTION REFER SHEETS E6-01 & E7-01.
 - 3) GRATING AT LANDINGS ARE 1 1/2 x 3/16 (BY OTHERS)



STAIRTOWER #1 PLAN AT T.O.S ELEV: SEE PLAN

- FIELD NOTE:
- 1) ALL FIELD BOLTS ARE 3/4 DIA A325N TYPE 1 GALV. BOLTS WITH A563DH NUTS.
 - 2) FOR TYPICAL SECTION REFER SHEETS E6-01 & E7-01.
 - 3) GRATING AT LANDINGS ARE 1 1/2 x 3/16 (BY OTHERS)



STAIRTOWER #1 PLAN AT T.O.S ELEV: 93-2 1/2 (U.N.O)

- FIELD NOTE:
- 1) ALL FIELD BOLTS ARE 3/4 DIA A325N TYPE 1 GALV. BOLTS WITH A563DH NUTS.
 - 2) FOR TYPICAL SECTION REFER SHEETS E6-01 & E7-01.
 - 3) GRATING AT LANDINGS ARE 1 1/2 x 3/16 (BY OTHERS)

QUANTITIES SHOWN FOR (1) C-FRAME HRSG
TOTAL OF (2) C-FRAME HRSG'S REQUIRED

WELD SYMBOLS ARE PER AWS A2.4 LATEST EDITION

NOOTER/ERIKSEN INC.
SUPPLIER SUBMITTAL REVIEW

REVIEW OF VENDOR DRAWINGS DOES NOT RELIEVE THE VENDOR OF RESPONSIBILITY FOR ACCURACY OF DIMENSIONS AND COMPLIANCE TO CODES, NOOTER/ERIKSEN SPECIFICATIONS AND P.A. REQUIREMENTS

A	REVIEWED AND ACCEPTED
B	REVIEWED WITH COMMENTS (WORK MAY PROCEED)
C	REVISE AND RESUBMIT (WORK MAY NOT PROCEED)
D	REVIEWED FOR INFORMATION ONLY

RELEASE DATE: _____ REVIEWERS INITIALS: _____

PROJECT:	ST. JOSEPH ENERGY CENTER	JOB NO	CODE	SHT	REV	FE
DRAWING NO.	151240-PF-E01-04					

SHOP NOTES:

1. Paint erection mark on left end of member as detailed. For Beams - left end - top flange & near side of web.
2. All W-shapes-A992, WT-992, plate, angle & channel-A36 (U.N.O)
3. Cope depths are listed first. Cope lengths are to ends of beams.
4. 1/4 edge & end distance unless noted.
5. See Mid America Steel, Inc std. beam connection sheet for clip angle details.
6. Both Sides of material adjacent to open holes must be free of loose scale and burrs.
7. All welding to be done by A.W.S. certified welders.
8. Use E 70XX welding electrodes
9. Omit Paint Within 3" of all open holes. [] Yes [X] No
10. Welds shown are for strength - seal weld all joints when galvanizing is req'd.
11. Omit paint from all Nelson studs and surfaces notes "**"
12. * No paint within 3" of the field welds.
13. Coat plate with carboline carbozinc 11 (green), 5 mils DFT.
13. ** Hold galvanizing back 3" from field welds.

REV.	DATE	DESCRIPTION	BY	CHK
3	07-29-16	HANDRAIL PCMK UPDATED & MIDDLE POST REMOVED	TL	VP
2	07-27-16	REVISED AS NOTED	TL	VP
1	07-18-16	ISSUED FOR CONSTRUCTION	TL	VP
0	06-01-16	FOR APPROVAL	TL	VP

Holes:	1 3/16 U.N.O	PAINT:	PER SPEC'S
DATE:	06-01-16	DRAWN BY:	TL
CHECKED BY:	VP	REVISOR:	---
REVISED:	---	REF:	---

JOB and LOCATION:	ST. JOSEPH ENERGY CENTER NEW CARLISLE, INDIANA
ITEM:	STAIRTOWER #1 PLANS
CUSTOMER:	NOOTER/ERIKSEN INC.
ARCH. ENG.:	NOOTER/ERIKSEN INC.
ORDER NO.:	S11579
SHEET NO.:	E2-02
REV.:	3

ALL VERIFIES WILL BE ASSUMED CORRECT AS SHOWN UNLESS NOTED OTHERWISE BY APPROVER

ERECTOR NOTE!

USE 1-HIGH STRENGTH WASHER OVER ALL SLOTS IN CONNECTION ANGLES FOR ALL BEAM TO BEAM AND BEAM TO COLUMN CONNECTIONS.

NO BACK CHARGES WILL BE ACCEPTED UNLESS AUTHORIZED BY MID AMERICA STEEL, INC. DOCUMENTATION ON BACK CHARGES MUST INCLUDE MARK NUMBER OF INCORRECT PIECE AND A COMPLETE DESCRIPTION OF REMARK REQUIRED.