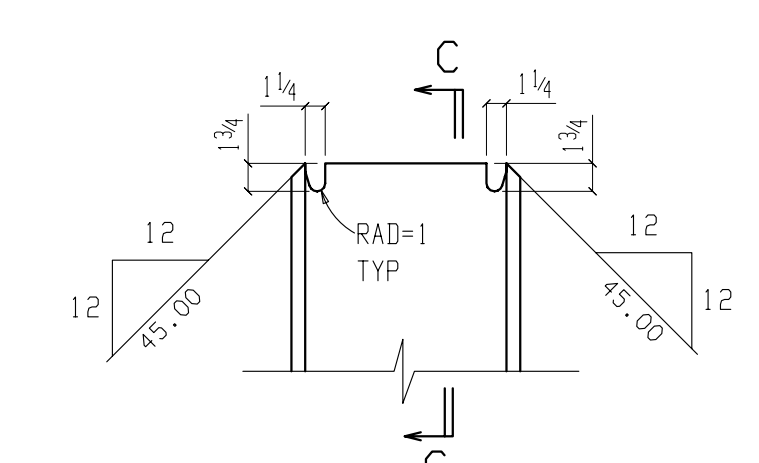


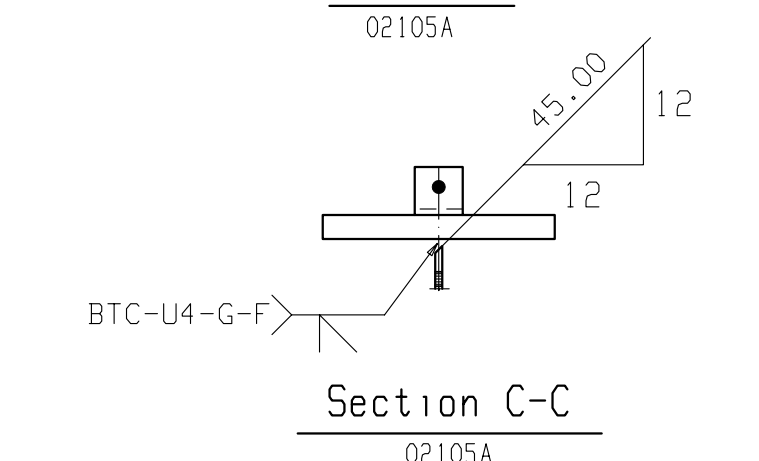
ONE COLUMN 02109A

AT GRID: W|14 1/16 x 11 1/16
 F|15 1/2 x 1 1/16
 R|2 3/8 x 1 3/8
 1.7 & N.2

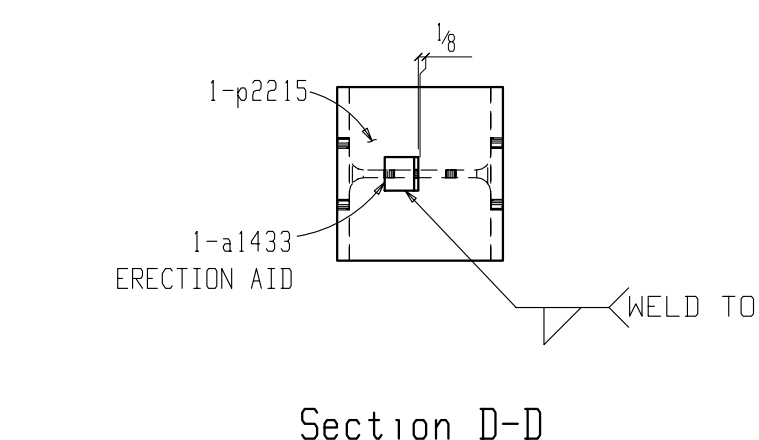
Section A-A
 02109A



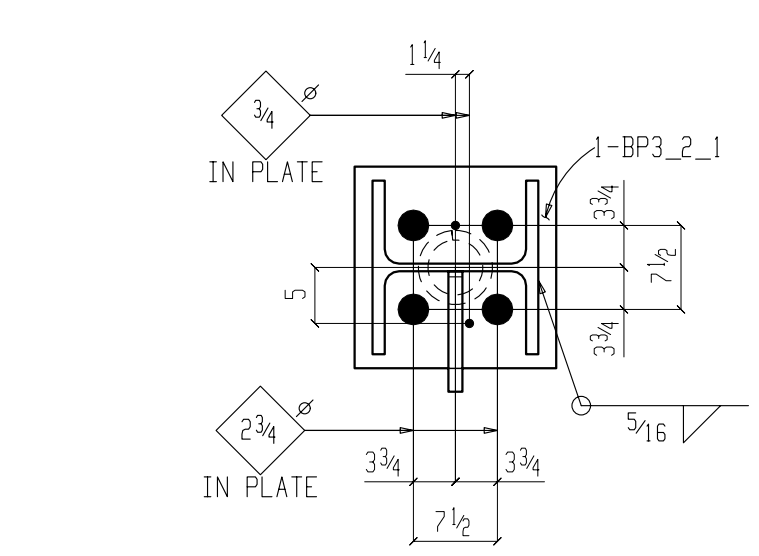
DETAIL-A
 02109A



Section C-C
 02109A



Section D-D
 02109A



Section B-B
 02109A

ALL 7/8" DIA BOLTS ARE A193, GRADE B8, CLASS 2, TYPE 304
 ALL 3/4" DIA BOLTS ARE A193, GRADE B8, CLASS 1, TYPE 304

- NOTE(S):
- 1) CONTRACTOR TO FIELD VERIFY ALL DIMENSIONS AND ELEVATIONS PRIOR TO FABRICATION AND INSTALLATION.
 - 2) CONTRACTOR AND/OR E.O.R. TO PROVIDE ALL HANDRAIL POST LOCATIONS.
 - 3) E.O.R. TO VERIFY ALL CONNECTIONS.
 - 4) ALL VERIFIES WILL BE ASSUMED CORRECT AS SHOWN UNLESS NOTED OTHERWISE BY APPROVER.

REF DWGS: E201-E205

1. FULLY PRETENSION ALL SHOP INSTALLED HIGH STRENGTH BOLTS U.N.
2. ⊗ INDICATES SIDE OF PLATE SHOP IS TO MARK FOR ERECTION PURPOSES.
3. ALL CONNECTION ANGLE LEGS AGAINST BM WEB ARE 3/2" U.N.
4. ALL RUNNING DIM'S ARE TO END OF MAIN MATERIAL.
5. ALL WELDS ARE 1/4 THICK CONTINUOUS (U.N.O.).

SEQUENCE-02

ALL ERRORS IN FABRICATION MUST BE REPORTED TO THE FABRICATOR WITHIN 24 HOURS FOR DECISION AS TO THE BEST METHOD OF CORRECTION. BACK CHARGES WILL NOT BE ACCEPTED UNLESS OUR CONSENT IS GIVEN IN ADVANCE IN WRITING.

BILL OF MATERIAL

SHIP	MARK	NO. PCS.	DESCRIPTION	LENGTH FT.	IN.	FAB MARK	MAT'L A36 U.N.	ADV BILL P/L	WEIGHT	NOTES
02109A	ONE	COLUMN							3077	CVN
1		1	W14x145	56	10 3/4	02109A	A592	15-1	8250	SIE
1		1	PIPE 6 XXS	1	0	hss3	A53	21-1	53	
1		1	L3x3x3/8	0	3	a1433	A36		2	
1		1	PL 1/4x18	1	6	BP3_2_1	A572-50		161	
1		1	PL 1/2x14 1/16	1	3 1/2	p2215	A572-50		98	
1		1	PL 1/4x25 1/16	4	6 1/16	p4770	A572-50		482	
1		1	PL 3/8x10 1/16	1	5 3/4	p4273	A572-50		20	
1		1	PL 3/8x7	0	10	p576	A572-50		7	
1		1	PL 3/8x7 1/4			p1272	A572-50		4	

ALL MAT'L	ASTM-A36	U.N.	PRINT RECORD	REV	DATE	BY	DESCRIPTION	JOB
OPEN HLS	1 3/16 U.N.	BOLT 3/4" DIA	U.N.					LOCATION
WELDING	ELECTRODE-E70XX LH	U.N.						CUSTOMER
BOLTS:	A193, GRADE B8, CLASS 1, TYPE 304	U.N.						ARCH/ENGR
NUTS:	A194, GRADE F, TYPE 303	U.N.						TITLE
WASHERS:	STAINLESS STEEL FLAT WASHERS							DRAWN
SURFACE PREP:	SSPC-SP3							DATE
PAINT:	3 STEP EPOXY/URETHANE SYSTEM							DATE
COLOR:	SHALE GRAY.							
PAINT OPEN HLS	YES	NO	U.N.					

REV	DATE	BY	DESCRIPTION	JOB
A	09-11-15	VPM	ISSUED FOR APPROVAL	CUSTOMER
O	10-12-15	VPM	ISSUED FOR FABRICATION	ARCH/ENGR

JOB NO: 15-32
 DWG NO: 02109