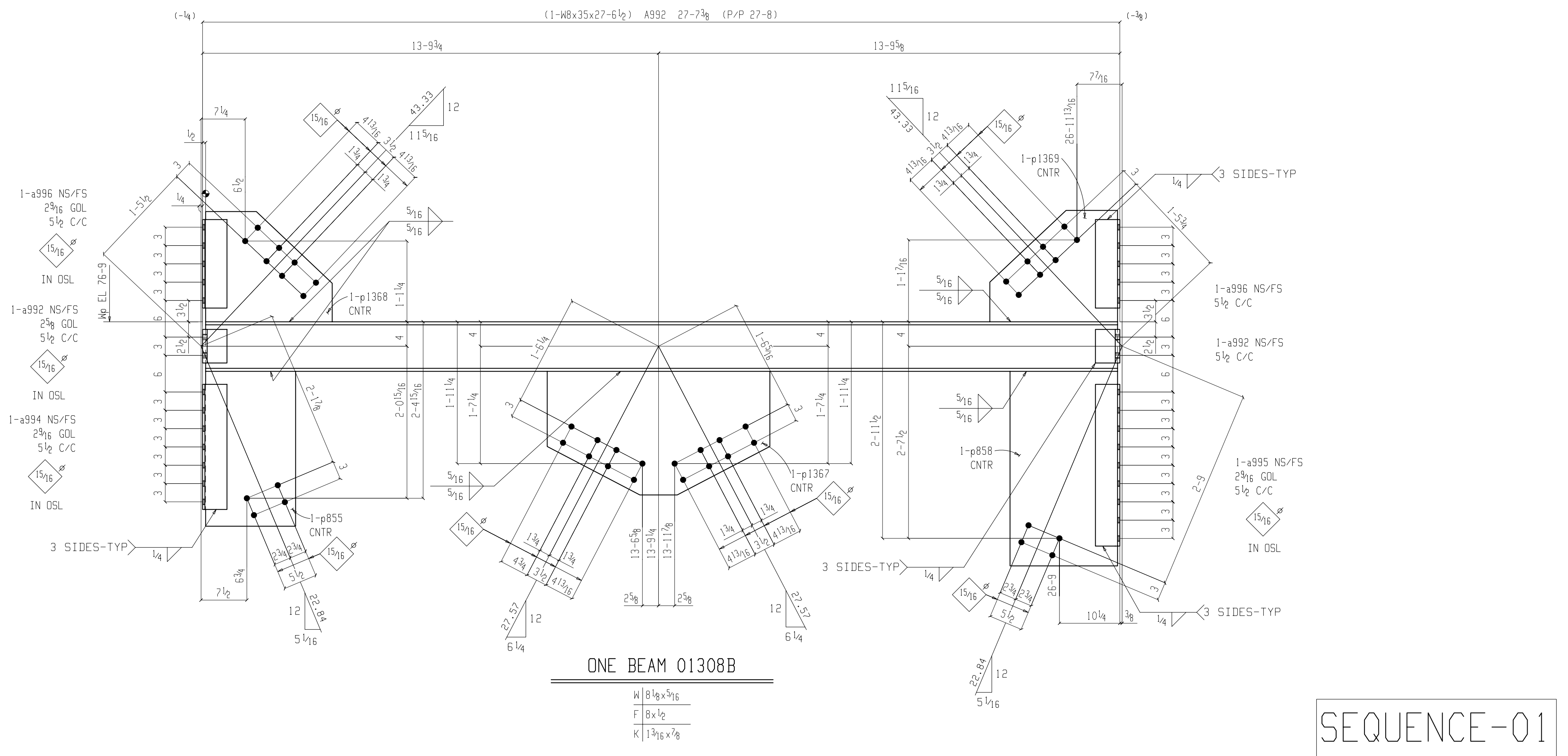


BILL OF MATERIAL										
SHIP	MARK	NO. PCS.	DESCRIPTION	LENGTH FT.	IN.	FAB MARK	MAT'L A36 U.N.	ADV BILL P/L	WEIGHT	NOTES
01308A		ONE BEAM							1275	CWN
1		1	W8x35	27	6 1/2	01308A	A992	3-14	964	
4		4	L4x3 1/2 x 1/2	0	5 1/2	a829	A36		22	
2		2	PL 1/2 x 17 1/2	2	4 1/2	p964	A572-50		140	
2		2	PL 1/2 x 16 1/2	2	4 1/2	p3549	A572-50		137	
4		4	PL 3/8 x 3 3/8	0	7 1/2	p3550	A572-50		12	
			FIELD BOLTS							
		8	3/8 Dia A193-2	0	2 1/2					+IFL WASH
01308B		ONE BEAM							1407	CWN
1		1	W8x35	27	6 1/2	01308B	A992	3-14	964	
4		4	L4x4x3/4	0	5 1/2	a992	A36		34	
2		2	L4x4x3/8	2	2 1/2	a995	A36		33	
2		2	L4x4x3/8	1	8 1/2	a994	A36		43	
4		4	L4x4x3/8	1	2 1/2	a996	A36		47	
1		1	PL 1/2 x 20 1/4	3	0 1/2	p1367	A572-50		105	
1		1	PL 3/8 x 18 1/4	1	8 1/2	p1369	A572-50		41	
1		1	PL 3/8 x 18 1/2	1	8 3/4	p1368	A572-50		40	
1		1	PL 3/8 x 17 1/2	2	7 1/2	p858	A572-50		60	
1		1	PL 3/8 x 14 3/4	2	1 3/8	p855	A572-50		40	
			FIELD BOLTS							
		8	3/8 Dia A193-2	0	2 3/4					+IFL WASH
		14	3/8 Dia A193-2	0	2 1/2					+IFL WASH
		28	3/8 Dia A193-2	0	2 1/4					+IFL WASH
		10	3/8 Dia A193-2	0	2					+IFL WASH



ALL 7/8" DIA BOLTS ARE A193, GRADE B8, CLASS 2, TYPE 304
 ALL 3/4" DIA BOLTS ARE A193, GRADE B8, CLASS 1, TYPE 304

- NOTE(S):
 1) CONTRACTOR TO FIELD VERIFY ALL DIMENSIONS AND ELEVATIONS PRIOR TO FABRICATION AND INSTALLATION.
 2) CONTRACTOR AND/OR E.O.R. TO PROVIDE ALL HANDRAIL POST LOCATIONS.
 3) E.O.R. TO VERIFY ALL CONNECTIONS.
 4) ALL VERIFIES WILL BE ASSUMED CORRECT AS SHOWN UNLESS NOTED OTHERWISE BY APPROVER.

REF DWGS: E101-E105

- FULLY PRETENSION ALL SHIP INSTALLED HIGH STRENGTH BOLTS U.N.
- ⊗ INDICATES SIDE OF PLATE SHOP IS TO MARK FOR ERECTION PURPOSES.
- ALL CONNECTION ANGLE LEGS AGAINST BM WEB ARE 3/2" U.N.
- ALL RUNNING DIM'S ARE TO END OF MAIN MATERIAL.
- ALL WELDS ARE 1/4 THICK CONTINUOUS (U.N.O.).

ALL MAT'L	ASTM-A36	U.N.	PRINT RECORD	REV	DATE	BY	DESCRIPTION	JOB
OPEN HLS	1 3/16 U.N.	BOLT 3/4" DIA	U.N.					LOCATION
WELDING	ELECTRODE-E70XX LH	U.N.						CUSTOMER
BOLTS:	A193, GRADE B8, CLASS 1, TYPE 304	U.N.						ARCH/ENGR
NUTS:	A194, GRADE F, TYPE 303	U.N.						TITLE
WASHERS:	STAINLESS STEEL FLAT WASHERS							BEAMS
SURFACE PREP:	SSPC-SP3							DATE 08-24-15
PAINT:	3 STEP EPOXY/EPOXYURETHANE SYSTEM							DATE 08-24-15
COLOR:	SHALE GRAY.							
PAINT OPEN HLS	YES	NO	U.N.					

SEQUENCE-01

ALL ERRORS IN FABRICATION MUST BE REPORTED TO THE FABRICATOR WITHIN 24 HOURS FOR DECISION AS TO THE BEST METHOD OF CORRECTION. BACK CHARGES WILL NOT BE ACCEPTED UNLESS OUR CONSENT IS GIVEN IN ADVANCE IN WRITING.

JOB NO: 15-32
 DWG NO: 01308